

1. SMPS - POWER CIRCUIT

IMPORTANT SAFETY

WHEN SERVICING THIS CHASSIS, UNDER NO CIRCUMSTANCES SHOULD THE ORIGINAL DESIGN BE MODIFIED OR ALTERED WITHOUT PERMISSION FROM THE LG CORPORATION. ALL COMPONENTS SHOULD BE REPLACED ONLY WITH TYPES IDENTICAL TO THOSE IN THE ORIGINAL CIRCUIT. SPECIAL COMPONENTS ARE SHADED ON THE

SCHEMATIC FOR EASY IDENTIFICATION. THIS CIRCUIT DIAGRAM MAY OCCASIONALLY DIFFER FROM THE ACTUAL CIRCUIT USED. THIS WAY, IMPLEMENTATION OF THE LATEST SAFETY AND PERFORMANCE IMPROVEMENT CHANGES INTO THE SET IS NOT DELAYED UNTIL THE NEW SERVICE LITERATURE IS PRINTED.

NOTE :

1. Shaded () parts are critical for safety. Replace only with specified part number.
2. Voltages are DC-measured with a digital voltmeter during Play mode.

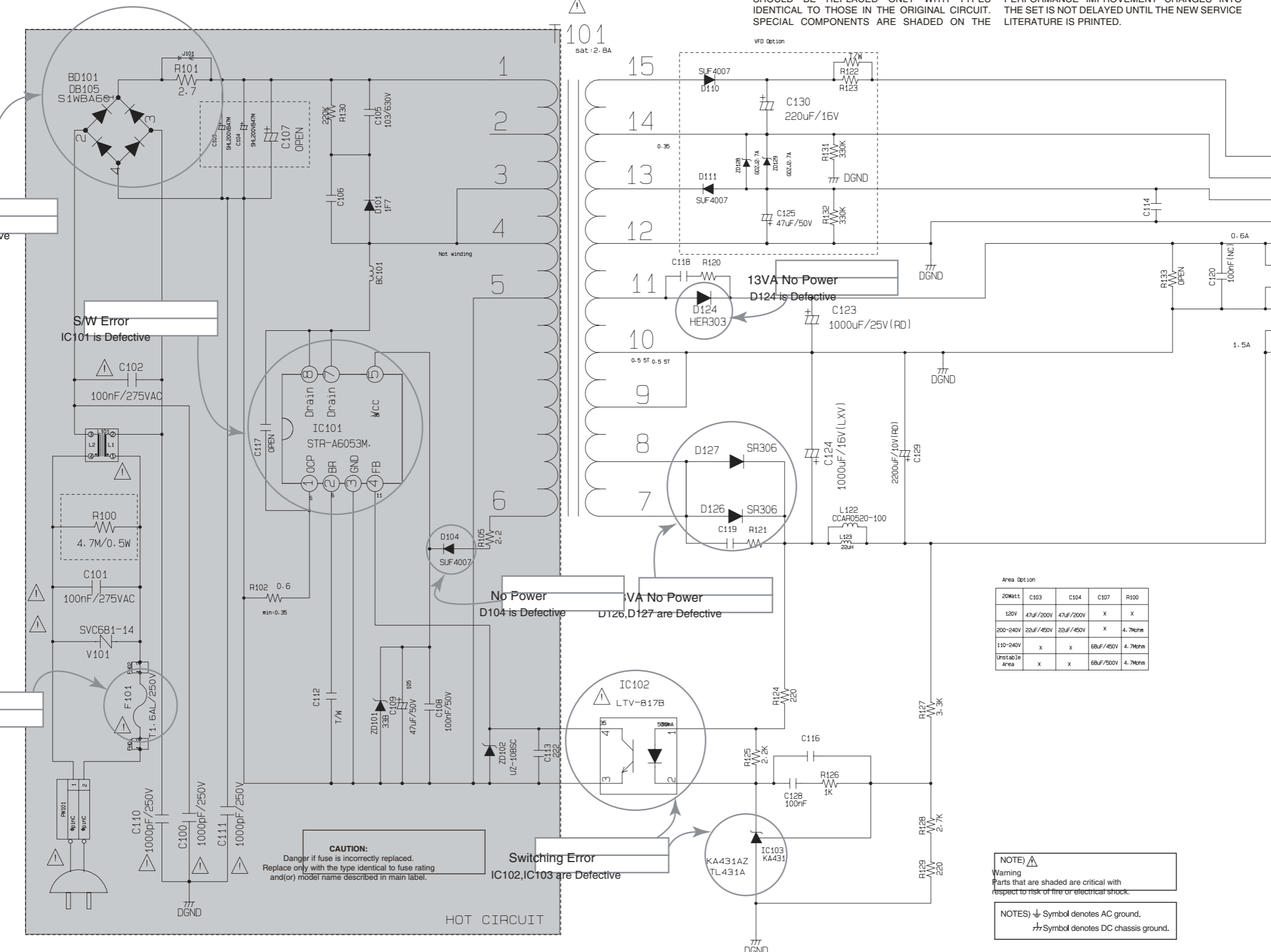
1

2

3

4

5



VFD OPTION	
BC561	PIN 1- PIN 6 (6 PIN CNT)
BC561/572	PIN 1- PIN 10 (10 PIN CNT)

10	FL (+)
9	FL (-)
8	VKK
7	GND
6	13VA
5	13VA
4	GND
3	GND
2	5.3VA
1	5.3VA
P101	

Area Option

20Watt	C103	C104	C107	R100
120V	47uF/200V	47uF/200V	X	X
200-240V	22uF/450V	22uF/450V	X	4.7Mohm
110-240V	X	X	68uF/450V	4.7Mohm
Unstable Area	X	X	68uF/500V	4.7Mohm

NOTE ⚠
Warning
Parts that are shaded are critical with respect to risk of fire or electrical shock.

NOTES ⚡ Symbol denotes AC ground.
⏏ Symbol denotes DC chassis ground.