

SELF DIAGNOSIS FUNCTIONS



SELF DIAGNOSIS FUNCTION

The units in this manual contain a self-diagnostic function. If an error occurs, the STANDBY LED will automatically begin to flash. The number of times the LED flashes translates to a probable source of the problem. A definition of the STANDBY LED flash indicators is listed in the instruction manual for the user's knowledge and reference. If an error symptom cannot be reproduced, the remote commander can be used to review the failure occurrence data stored in memory to reveal past problems and how often these problems occur.

DIAGNOSTIC TEST INDICATORS

When an error occurs, the STANDBY LED will flash a set number of times to indicate the possible cause of the problem. If there is more than one error, the LED will identify the first of the problem areas.

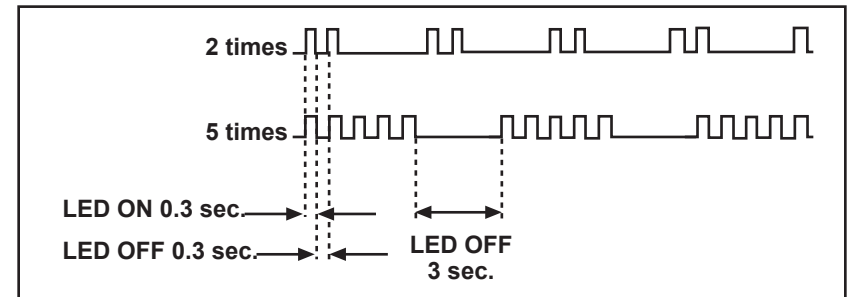
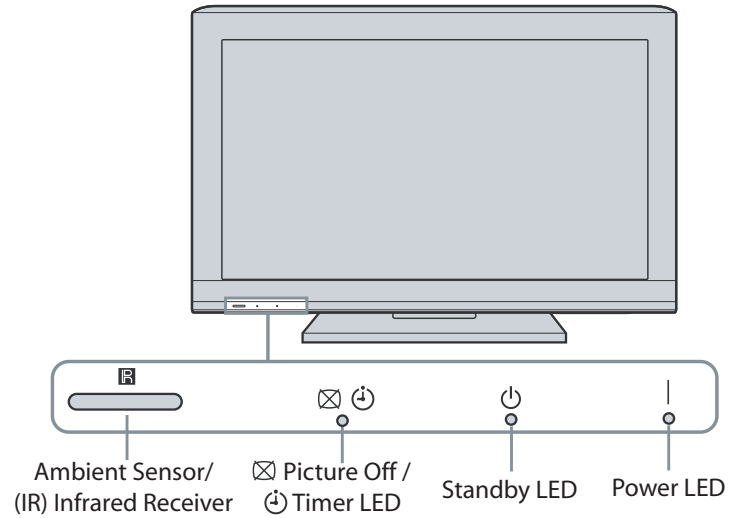
Result for all of the following diagnostic items are displayed on screen.

If the screen displays a "0", no error has occurred .

Diagnostic Item	Diagnostic Item Description	Number of times Standby LED blinks	Possible Location
MAIN_POWER	Main Power Over Voltage Protection	2	BAL Board G2HEW (Power) Board (KDL-40HX701 Only) GD2W (Power) Board (KDL-46HX701 Only) G5EW (Power) Board (KDL-55HX701 Only)
DC_ALERT	DC Alert	3	BAL Board G2HEW (Power) Board (KDL-40HX701 Only) GD2W (Power) Board (KDL-46HX701 Only) G5EW (Power) Board (KDL-55HX701 Only) D1 Board (KDL-55HX701 Only)
DTT-WDT	DTT Error		
AUD_PROT	Audio Error Detection		
BALANCER	Panel Balancer Error	4	BAL Board D1 Board (KDL-55HX701 Only)
TCON_ERR	TCON Error	5	BAL Board LCD Panel TCON Control MT Board
HFR_ERR	HFR Error		
P_ID_ERR	Panel ID NVM Error		
BACKLITE	Backlight Error	6	BAL Board LCD Panel
TEMP_ERR	Temperature Error	7	BAL Board
FAN_ERR	Fan Error (Not Used in these models)	NA	NA
RGB_SEN	RGB Sensor ACK Error	NA	NA

SELF DIAGNOSIS FUNCTIONS

STANDBY LED FLASH COUNT



SELF DIAGNOSIS FUNCTIONS

VIEWING THE SELF CHECK DIAGNOSTIC LIST

For errors with symptoms such as “power sometimes shuts off” or “screen sometimes goes out” that cannot be confirmed, it is possible to bring up past occurrences of a failure for confirmation on the Self Check diagnostic screen:

1. TV must be in standby mode. (Power off).
2. Press the following buttons on the Remote Commander within a second of each other:

DISPLAY → Channel **5** → Volume **-** → **POWER**.

↑ * NOTE: This differs from accessing Service Adjustments Mode (Volume +)

SELF CHECK

Item name	Error count (00-99)	Error history (Last failure time beforehand)	Error history (Failure time before last)	Error history (The last failure time)	STBY LED flash time
000 RGB_SEN	00				
002 MAIN_POWE	0501210811	0412311234	0311111825	00	
003 DC_ALERT1	00				
003 AUD_PROT	00				
003 DTT_WDT	00				
004 BALANCER	00				
005 HFR_ERR	00				
005 TCON_ERR	00				
005 P_ID_ERR	00				
006 BACKLITE	00				
007 TEMP_ERR	00				
007 FAN_ERR	00				
010 RESERVED	00				
011 RESERVED	00				

12345-00333-06789

Panel operation time by hour (MAX:65535)
Boot count (MAX:65535)
Total operation time by hour (MAX:65535)

SELF DIAGNOSIS FUNCTIONS

CLEARING THE SELF CHECK DIAGNOSTIC LIST

Since the diagnostic results displayed on the screen are not automatically cleared, always check the self-diagnostic screen after you have completed the repairs to be sure you have cleared the result display to "0".

1. To clear the Error history and Error count: Press the Channel **8** → Channel **0**.
2. To clear the Panel operation time: Press the Channel **7** → Channel **0**.

EXITING THE SELF CHECK DIAGNOSTIC SCREEN

1. To exit the Self Diagnostic screen, turn off the power to the TV by pressing the POWER button on the remote or the POWER button on the TV.